

# The Villager

Moreton Morrell

April  
2017



MORETON MORRELL  
COLLEGE

Sponsored by

*part of*  
WARWICKSHIRE COLLEGE GROUP

# Chair's Report

Spring has definitely arrived and the village is looking lovely with all the blossom and daffodils out, let's hope the sunshine we all enjoyed when the clocks went forward is a sign of good weather to come!

## Defibrillator

I am delighted to announce that the Parish Council's application for an Automated External Defibrillator (AED) from the British Heart Foundation has been successful, and we have just taken delivery of the medical equipment, together with its comprehensive training kit, which is wonderful news.



The Parish Council has also been successful in adopting the telephone box in the village from BT to house the defibrillator, and BT will continue to supply the power necessary to keep the equipment at the correct temperature.

Our thanks are particularly extended to our resident doctors in the village, Cat and Duncan Gordon together with Claire and David Nuttall for identifying the grant opportunities with the British Heart Foundation and the adoption scheme with BT.

According to Dr Duncan Gordon the great news about this life-saving equipment is that **you don't need any training to use it!** However, we do recognise that many villagers would be less sure about using the defibrillator, and we want local residents to see how easy it is to use. To achieve this we plan to run some Familiarisation Sessions (details TBC) so that residents can see the equipment and get to know how to use it.

If you are interested in attending one of these future sessions please can you register your interest by contacting me at [anne@anne-parry.co.uk](mailto:anne@anne-parry.co.uk) or on 01926 650064 with your details, so that we can judge how many sessions and how many facilitators are needed.

Similarly, if you would like to become involved in facilitating the familiarisations sessions, want to help us appropriately renovate the phone box once it is "ours" or want to get involved in some group fund-raising for the BHF, to say thank you for their generous gift, please get in touch.

# Chair's Report

## Family Fun Time – 1 May 2017

Can I remind you all to put 1 May in your diary for the Family Fun Time on the playing field – this promises to be a great event, which is being supported by the Parish Council, and we look forward to seeing as many of you as possible on the village playing field for some fun games and hopefully the first of many picnics in the village this year.



## Wellesbourne Sports & Community Centre

Just to let you all know the Wellesbourne Sport & Community Centre (WSCC) has now opened and invited villagers to join the gym and take part in a wide range of exercise classes. For further information please visit [www.wellesbournescscc.uk](http://www.wellesbournescscc.uk) – gym membership is available from £20 per month and the facility is located in Loxley Close near the Co-op.

## New Medical Centre

Plans are progressing with the new medical centre and construction is anticipated to start in the summer once the final legal arrangements have been signed and sealed.

## New Entrance Signs

My thanks to Cllr Bernard Keavy for his hard work in organising the new village entrance signs, which is why the brick planters at the bottom of the village are in the process of being removed. Our thanks are also extended to Carl Cleeton for the highly skilled production of our new signs.

The Parish Council met on the  
20 March 2017

To read the full minutes from the meetings and the latest news and updates  
please visit the Parish Council website.

[www.moretonmorrellpc.co.uk](http://www.moretonmorrellpc.co.uk)

# Chair's Report

## Community Forum

The Wellesbourne and Kineton Community Forum was held on 2 March when guest speakers included Highways and Education officers from Warwickshire County Council. Jo Edwards, WCC Principal Road Safety Engineer and Chloe McCart, WCC School Organisation Planning Manager. Andrew Marshall, Chairman of NPAPC also gave an inciteful presentation on the hazardous road issues in respect of Newbold Road.

In a nutshell WCC advised that a lack of funding meant it was difficult to address speed reduction measures on the road due to higher priorities elsewhere in the county, but were now far better informed of the issues due to Andrew's excellent presentation.

Chloe McCart advised on the impact of new developments on the local primary schools in Wellesbourne, Moreton Morrell and Kineton, as well as Kineton High School and Moreton Morrell College. She talked about the anticipated number of pupils per year group for new housing numbers and whilst there was capacity in some of the schools many places were being filled as a result of preferences from parents living both in and outside the local area. However, priority on applications would be given to children from the immediate area.



## Moreton Morrell College

Following a meeting with Angela Joyce, group chief executive of Warwickshire College in March, parish councillors have agreed to engage in further discussions with the college in respect of the terms of reference for the future relationship with the college.



**Cllr Anne Parry**  
**Chair of Moreton Morrell Parish Council**

**Ward Member for Wellesbourne East**  
**Stratford on Avon District Council**  
**Mobile: 07917 117737**  
**Email: avparry1@btinternet.com**

# Village News

## COLLEGE ACCESS: ALERT

It has come to our attention that at least one villager has received a legal letter from Warwickshire College Group about being seen in College grounds. While we believe that villager's long term access to College grounds should continue uninterrupted, any action taken by the College against individuals is outside of our control. Please let us know if you receive such a letter by contacting any Parish Councillor. The Parish Council will continue to seek a different resolution with the College and pursue any legal route available to establish access for villagers.

## Hastings House, Wellesbourne: Patient Participation Group

The Patient Participation Group under the chairmanship of Philip Wright-Howarth meet regularly. The purpose is to represent the patient group and act as critical friend to the practices at Hastings House, Wellesbourne and Little Thatch, Kineton.

Our three main areas of focus at present are:

1. The New Build programme.
2. Communications.
3. Operations of the Practices.



## Transport Survey

Copy of the comment included in the Parish Councils submission to the Transport Survey.

*“Moreton Morrell Parish Council object to the inclusion of a proposed Eastern Relief Road for the following reasons:*

- 1. The proposed route lies through beautiful countryside which should be preserved*
- 2. We believe this will lead to increased urbanisation between Tiddington and Wellesbourne and destroy the current rural environment which surrounds these villages*
- 3. We believe it will directly impact our locality as more lorries and other traffic seek new routes*
- 4. It will directly impact on Charlecote Park, a wonderfully preserved National Trust property and park.”*

**Keep up to date**

**[www.facebook.com/Moretonmorrellpaddox](http://www.facebook.com/Moretonmorrellpaddox)**

**facebook.**

# Village News

## FROM THE ALLOTMENTS

Well Spring has arrived and the activity level on our allotments increased. The various plots are at different stages of development but, as I write, a number have potatoes planted and there is much digging and cultivation taking place, preparing seedbeds for a wide range of planned crops. Fruit trees are budding and in some cases flowering; exciting times ahead with great expectations.

Being on an allotment is also a time to sometimes stop and listen to the various sounds of nature and the great range of birds, to look and see the early flowers that have emerged. My camellia plant this year has a mass of flowers and the yellow of the daffodils fantastic. Whenever I go out on my plot, it is not long before I am joined by a robin which I talk to, much to the surprise I am sure of fellow allotment holders!

Have you thought of having an allotment? If so, let me know. It is very enjoyable and excellent exercise and, even if a plot does not immediately suit you, at least you are on a waiting list.

And to close, a poem by William Wordsworth...

### To a Butterfly

*I've watched you now a full half-hour;  
Self-poised upon that yellow flower  
And, little Butterfly! Indeed  
I know not if you sleep or feed.  
How motionless! — not frozen seas  
More motionless! and then  
What joy awaits you, when the breeze  
Hath found you out among the trees,  
And calls you forth again*



John Moverley—tel: 651726

## VILLAGE WELCOME PACK

The Village Welcome Pack is available to anyone who is new to the village or perhaps returning after a spell away.

If you would like to obtain a copy please contact

Jane Cleeton: [clej1@btinternet.com](mailto:clej1@btinternet.com)

01926 651529

Or visit [www.moretonmorrellpc.co.uk](http://www.moretonmorrellpc.co.uk)  
to download a copy.

Moreton Morrell



Welcome to Moreton Morrell Parish

# Village News

## VILLAGE CONCERT

On Wednesday 29th March the school hall was buzzing with the energy and entertainment provided by the Village Choir, the School Choir and the Ukuleles (*see front page image*).

I joined the Village Choir just a few weeks ago after a conversation with a current member, I thought I was joining something just for fun, I never expected to be performing in front of an audience. All of my life I have been convinced I cannot sing (although I give it my best efforts in front of my cats), and maybe I am not exactly heading for The X-Factor but the Village Choir really is fun and has given me a new confidence. Sometimes they do talk about 'octaves', 'pitch' and 'key'; terms I have no idea about, however no one judges me or even mentions that I might sound 'off' any of these. And to perform in front of a packed hall alongside the amazing School Choir was just a joy. Thank you to all involved.

**Alison Gregory**  
**Editor of The Villager & Village Choir Member**



# Nature Watch

By Steve Harvey

## March

Late January and, on a television aerial a pair of Starlings are making whoopee. Not to be out done a pair of Bluetits were of similar mind in a nearby tree. Bit early for laying eggs maybe but I reckon the female was using her natural charms to secure her mate and make sure he stays around to help bring up a family. "PAIR BONDING", they call it, an age-old winning formula.

This pair have been together a while, they over winter under a gap in the roof and each Spring rear a family. Its win, win togetherness and I write this on Valentine's Day.

I was in Honnington early Feb and for the third year running I heard the first Chaffinch in roughly the same place. The Mexican wave of Chaffinch song then seems to spread everywhere within a couple of days. Soon after that the first Bumble Bee rumbled by stopping to refuel on heather nectar. Bumbles can get about a bit earlier than Honey Bees due to their fur coats.

A frosty morning and a Bullfinch did aerobatics on a small tree, drinking water droplets as they melted. Even though it wasn't in full breeding colour it looked stunning in the sun with its black head and dark pink chest.

Pigeons are flapping about in the ivy growing in the hedges and up trees, trying to keep a foothold and balance as they grab the dark ivy berries. They seem to leave them until late in the winter so I'm guessing they may be a bit bitter. They have to get really hungry before they attempt them.

Hampton on the Hill and the unmistakable call of a Raven (once you get the sound into your memory bank you recognise it immediately) in fact a pair of Ravens on a mission to gather twigs for a nest. February is the time they start however a pair of Carrion Crows were having none of it. Now they look large until they fly next to a massive Raven. The Carrion Crows flew in circles then rose and dived at the Ravens, each time they came close, squeaking all the time, the Raven stood its ground opening its beak in defiance. One Raven flew off with a beak full of twigs followed by the Carrion Crows. The remaining Raven stayed and began making a call I'd never heard before, a 'plink, plink' call from deep in its throat, sounding more like an electric door bell, nothing like a bird at all. The Crow family are a bright lot. I wonder what it was thinking to make that sound.





# Nature Watch

Lots and lots of catkins this year. If you get a chance to look along the Hazel twigs you should see tiny red stars. These are the female flowers waiting to be pollinated by the pollen-laden catkins. Then, through the Summer, they will grow into Hazel nuts. Most people don't notice these tiny red flowers. Go on. Have a look. You know you want to!



## April

I love this time of year when a plan comes together. A big plan, millions of year old. The sun warms the ground. Primroses appear, daisies (days eye), violets form purple clumps, just at the right time for Honey Bees and Bumbles and early Hoverflies to refuel on. Hedgerows begin to grow a green mist as Hawthorn pushes through. Elder and Honeysuckle join in, all ready to hide bird's nests from prying eyes. A vast plan unfolds; Willows are the first large tree to cloak themselves in green buds. Keck, or Cow Parsley, and Bluebells are pushing through the soil and moss.

The first Brimstone Butterfly flutters by hunting for sweet nectar. On a stags head Oak, with its dead antler top is the perfect place for a Woodpecker to drum, visiting several times in the day to use the dead hollow wood for special effect drumming. At least three pairs of Carrion Crows are on flying patrols, calling as they go, each pair trying to stake and hold territory.

Rooks nests were patched up and ready to go in Feb. I do like a Rook, the sound, the look and the character. Blackbirds are fighting; Sparrowhawks are everywhere - its not peace and love out there. Having said that Froggies went courting before the end of February and ponds filled with spawn. Two mink were spotted down at Brookside Pat told me - effective at keeping down rats but not so good for Moorhen chicks or Ducklings.

Slugs are on the move, very slowly, life in the slow lane, snails take a while longer it seems.

Mid March and just about dark; birds are still singing, Robins, the odd Thrush and, of course best of all, the Blackbird. This is not romantic; it's all very serious. They don't sing of love and joy, more like a threat. Their song is "I'm here, I know you're over there, don't come any closer, this is mine!"



# Village News

## YOUR CHURCH

Our Barn Service this year will be held on Sunday 18 June at 10:30am at Chesterton Fields Farm, just off the Fosse. It will be an informal family service and **all** are welcome. Sunday 18 June is Father's Day as well as the 'Bringing Communities Together' weekend, which is an initiative from Brendan Cox, the widower of the MP, Jo Cox. We very much hope to see as many as possible to make this a real family and community event and I am delighted to report that our school will be active participants in the event.

During March, Warwick Museum played and recorded music in the church. The music was originally written for the congregation of Moreton Morrell Church many years ago. It was the original music using instruments of that time. Also in August an International Floristry School is being hosted at Moreton Morrell. The various floral displays will be staged in the church. More information will be available nearer the time.

Grass cutting and maintenance has begun again in the churchyard. We are also adding plants to further brighten up the surroundings. We are grateful to the Parish Council for allowing us to salvage some plants from those in the brick containers at the entrances to the village which are being replaced. The churchyard is a great place to sit and reflect – why not try it.

For full information on our services and other activities, please refer to the Benefice magazine. However, as always, can I re-emphasise that everyone is welcome at our services and we would love to see you. Details are also always posted on the notice board at the church.

And now to make you smile:

*A little boy was overheard praying in a church service:  
"Lord, if you can't make me a better boy, don't worry  
about it, I'm Having a real good time like I am."*

**John Moverley**  
Church Warden



### Free Wi-Fi Hotspot at Moreton Morrell Village Hall

To access the service , search Wi-Fi on your device for **MMPC-VH-FREE-WIFI** and connect using password **mmfreewifi2016**



# Village News

## MORETON MORRELL COLLEGE UPDATE

### Minister impressed by apprentices

Minister for Apprentices and Skills Robert Halfon recently visited WCG meeting a range of apprentices including farriery, equine and agricultural engineering apprentices from Moreton Morrell.

Farriery apprentice Oliver Laker presented the minister with a commemorative horseshoe to mark his visit, which is now pride of place in the minister's office. He said, "It has been fantastic meeting some brilliant apprentices today who have taken their first steps on the ladder of opportunity to securing highly skilled jobs."

### Connor's the best bricklayer in the region

Moreton Morrell College apprentice Connor Keyte is officially the best at bricklaying in the West Midlands after winning the regional Guild of Bricklayers junior competition at Bournville College. Connor will now go forward to the national final in June where he will compete against bricklayers from across the country.

### Lambing time

With lambing season well under way, staff and students have been working around the clock on the college farm. Over 400 lambs have already been born, with students from a range of courses getting involved, including agriculture, countryside, animal welfare and vet nursing.

### Woodland work

As part of their Woodland Management unit, the Level 3 Arboriculture and Countryside Management students have been helping Warwickshire Wildlife Trust with some practical woodland management work at Wappenbury Woods.

They have been coppicing hazel in order to create an excellent habitat for wildlife. By cutting the hazel shoots to just above ground level sunlight is able to penetrate to the ground layer to encourage the growth of woodland plants. This in turn provides vital food and shelter for a variety of wildlife from small mammals to birds and insects.



# Dates & Events



**MORETON MORRELL**

**1 MAY 2017**

**2-4 P.M.**

**SUPPORT OUR  
VILLAGE  
PLAYING FIELD**



**BANK HOLIDAY  
FAMILY FUN TIME  
ON THE PLAYING  
FIELD**

---

**Big turnout  
needed to show  
support for our  
Village Playing  
Field**

---

**Bring your own  
picnic**

---

**Games including  
Rounders**

**Beat the Goalie**

**Basketball**

---

**Music**

**SEE YOU THERE!**

# Dates & Events

## Auto Science Easter Holidays at the British Motor Museum

Join us for some 'cracking' fun activities this Easter. Each day you can follow our Auto Science Secret Trail to discover the secrets of making British cars and drop into our activity space to design your own scientific car. Plus join our family tours, with our very own 'Mad Scientist' every day at 10.45am and 1.30pm.

Come and be amazed at our **Sublime Science Shows**, where science is brought to life in a 25 minute show full of cool interactive demonstrations and hands on activities where you will get a chance to make smoke rings, bubbles, and slime These are on Monday 10 April to Thursday 13 April & Tuesday 18 April to Friday 21 April, at 11am, 12pm, 2pm & 3pm.

Easter wouldn't be Easter without a **traditional Easter Egg hunt**, so help Shaun the Sheep and his flock find all the eggs hidden around the Museum, Friday 14 April to Monday 17 April.

For more information about all our activities visit [www.britishmotormuseum.co.uk](http://www.britishmotormuseum.co.uk) . All activities are included in Museum admission and no pre-booking is required, however during busy periods all activities are on a timed ticket basis and places are limited and are subject to availability, so to avoid disappointment please check on arrival.



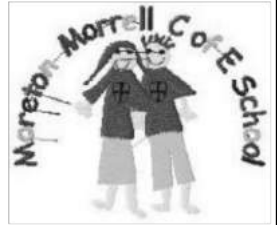
# Dates & Events

**Moreton Morrell CE Primary School**

**Will be closed on**

10<sup>th</sup>-21<sup>st</sup> April for Easter

26<sup>th</sup> May—2<sup>nd</sup> June for Half Term



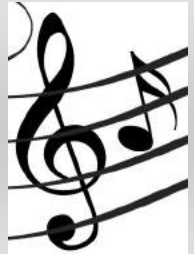
## **Village Choir**

The choir is taking a break until after Easter and will recommence on Tuesday 2nd May, 7.30pm - 8.30pm in the School Hall.

Anyone can join, just turn up.

Just £3.00 a week to cover costs.

*For details contact Sarah Irwin on 01926 651 364*



## **The Community Café**

**At Moreton Morrell Village Hall**

**will be open at 11:00 am on**

- ◇ April 27th
- ◇ May 11th & 25th

**Everyone is welcome.**

We always have homemade cake and there is no charge for the refreshments so why not give us a try if you haven't done so yet.

*Also with free Wi-Fi and use of the community laptop.*

**For information contact Jo on 650068**



# Dates & Events

## Special Barn Service - 18 June

On Sunday 18 June at 10:30am, the churches of the mid Fosse are holding a Barn Service at Chesterton Fields Farm, just off the Fosse and close to Leamington. It will be an informal family service and all are welcome from across the Diocese.

Sunday 18 June is Father's Day as well as the 'Bringing Communities Together' weekend, which is an initiative from Brendan Cox, the widower of the MP, Jo Cox. The Bishop of Coventry will be in attendance.



They very much hope to see as many as possible and there will be plenty of animals and machinery for the children to see.

**For more information contact John Moverley on 651726**

## Good Friday Lunch

The Good Friday lunch will be held in the New Room at Moreton Morrell Church on Friday 16th April from 12.30pm



## Fun Ride

### Chesterton Church, Sunday 21st May

Please come with your friends and enjoy a ride through the countryside away from the crowds and traffic, and for those who prefer a little excitement, optional jumps are en route.

**Details Lyn Smith 07759 454195**



# Community

## Have your say

Got something to say about Moreton Morrell?

Or would you like to publicly give thanks to someone in the village who has been of great help? Please send your news, events, letters and comments to me, the editor: Alison Gregory

Email: [moreton.morrell@gmail.com](mailto:moreton.morrell@gmail.com)

Phone: 07775 994 131



***Deadline for next edition 30th May 2017***

*This is your magazine, please do contribute in any way you can.*

If you do not get a copy of The Villager delivered to your property please let us know and we will endeavour to sort it out. Extra copies are always left at the church and a PDF copy is always online at [www.moretonmorrellpc.co.uk](http://www.moretonmorrellpc.co.uk)

## Struggling to get to your appointment?

**VASA's Volunteer Transport Service** takes people who are without their own transport to medical appointments at hospitals, doctors' surgeries, dentists' surgeries and day centres across Stratford District and beyond. This door-to-door service is essential to people who otherwise would at best struggle to keep health care appointments, at worst not get to them at all. The service is available to anyone who has a genuine need for transport.

**For more information or to book a journey please telephone**

**01789 296344 Open from 9.00am – 4.30pm Monday to Friday**

**Pricing:** We ask for the volunteer driver's costs to be paid at the rate of 45p per mile and there is a small administration fee per journey.





# Community



We are delighted to be able to offer families a new Holiday Break Service.

If you're planning a UK-based break by the seaside or maybe even nearer to home, this may be just what you are looking for – it couldn't be simpler to book and you will get a personal service from our staff and volunteers who will make time to understand your needs.



"To meet the needs of disabled children, young persons, adults, and their families and carers through the provision of short break activities, care, support, training, advice, and brokerage tailoring services which are bespoke to the individual"



For more information about our services  
**CONTACT US**

Fairview House, 26 Vicarage Lane, Warwickshire, CV33 9HS  
Phone: 07721 198122  
E-mail: [info@entrustcarepartnership.org.uk](mailto:info@entrustcarepartnership.org.uk)  
[www.entrustcarepartnership.org.uk](http://www.entrustcarepartnership.org.uk)



## **BURNHAM-ON-SEA - SKEGNESS - WICKSTEED PARK**

We are delighted to be able to offer fully equipped and accessible static holiday homes, in three fantastic destinations, at competitive prices that are below the commercial rates. These affordable holidays for families caring for a disabled child or young person, or disabled adults with their friends, family and carers will provide a wonderful opportunity to escape from the 'everyday' and refresh body and mind for all those across Warwickshire and the West Midlands.

A £25.00 deposit will secure your booking.

**Call us now for a friendly and helpful service on 07549 495474 or email us on [bookings@entrustcarepartnership.org.uk](mailto:bookings@entrustcarepartnership.org.uk) [www.entrustcarepartnership.org.uk](http://www.entrustcarepartnership.org.uk)**

# Community

## Warwickshire's new Living Well with Dementia website

Warwickshire County Council has launched a brand new website [warwickshire.gov.uk/dementia](http://warwickshire.gov.uk/dementia) to support people living with Dementia in Warwickshire.



The website is designed for people with dementia, their carers, family and friends as well as practitioners supporting people with dementia and organisations who would like to know more about becoming dementia friendly.

The new website is easier to navigate and includes a new support and services map to enable people to search for dementia services in their local area.

Warwickshire County Council's Public Health and Strategic Commissioning and Communications team have developed the website based on local consultation and best practice guidance.

The website was launched as part of Warwickshire's refreshed Living Well with Dementia Strategy (2016-2019).



# Community

## WRCC Energy

**WRCC is a registered charity helping residents to save money on their heating oil.**

By buying in bulk, we are able to achieve very competitive prices for our members.

**For further details please visit  
[wrccenergy.org.uk](http://wrccenergy.org.uk) or phone 01789 472419**

### Recent Member Prices

March 2017

Kerosene 38.74ppl - Red Diesel 51.50ppl

February 2017

Kerosene 38.97ppl - Red Diesel 48.97ppl

## UBUS - Bringing U closer together

The scheme is for residents of any age, wherever they may live in the district, who are stuck for transport to get to local destinations on weekdays between about 9.30am and 2.30pm.

The scheme is for you if you:

- Have a genuine need for local transport and
- Cannot access public transport because of mobility problems or other issues or
- Live in an isolated location with no, or infrequent levels of, public transport

The UBUS service can be used for a wide range of individual travel needs, such as visiting friends, attending social groups, leisure activities, lifelong learning and, of course, shopping.

**To find out more information or to book a journey please call 01789 264491.**



# The Parish Council

**Chair:** Anne Parry

Email: avparry1@btinternet.com

Mobile: 07917 117737

**Vice Chair:** Jane Cleeton

Email: cleej1@btinternet.com

Telephone: 01926 651529

**Clerk to the Council:** Pam Routly

Email: pamroutly@btinternet.com

**Councillors:**

James Gordon

Bernard Keavy

Gerry Slora

Elizabeth Greetham

Jo Ford

**Sub Committees:**

**Planning:** Parry, Gordon, Keavy, Greetham

**Playing Field:** Cleeton, Slora, Greetham

**Speed Awareness:** Gordon, Parry

**Village Appearance:** Keavy, Gordon

**Village Hall/Church/College:** Greetham, Cleeton, Keavy

**Footpaths:** Slora, Gordon

**The Annual Parish Meeting will be  
held in Moreton Morrell Village Hall  
Monday 15 May 2017  
7.30pm**

*Please check the website to confirm the date nearer the time*

For more news from the Parish Council visit

[www.moretonmorrellpc.co.uk](http://www.moretonmorrellpc.co.uk)