

Moreton Morrell



Welcome to Moreton Morrell Parish

On behalf of The Parish Council, let me welcome you to the Parish, which consists of Moreton Morrell and Moreton Paddox. We hope that the information given in this Welcome Pack will help you to settle more comfortably into your new home and the village. Equally if you have lived in the Parish for many years I hope you find the pack useful.

Neighbours usually become your first contacts and advisers, but please feel free to telephone any of the Councillors or Clerk for information and help. As residents, we trust that you will quickly become and feel part of this community. We have tried to gather as much useful local information as possible, but would be pleased to hear any suggestions or improvements you might have about this pack.

Rob James

Chairman of the Parish Council

Moreton Morrell History

Moreton Morrell is a village and civil parish in the county of Warwickshire, England. It is part of the historic hundred of Kington and is located about three and a half miles north west of the village of Kington. It is an ancient settlement that appears in the Domesday Book as "Mortone". From at least the early Norman times it has consisted of the 'town' of Moreton, and the hamlet of Morrell.

The Parish consists of Little Morrell in the North, the village of Moreton Morrell, Moreton Paddox in the South and a small number of houses to the West of the Fosse Way. The boundaries are formed: to the east by the Fosse Way, to the north by Thelsford Brook running from the Fosse westwards; and to the south, by a valley running from Hell Hole on the Fosse to the bottom of Staple Hill.

Until the end of the 19th century, the village was largely self sufficient with 45 occupations recorded in the second half of the 19th century.

The population in 1801 was less than 200 and very similar to that cited in the Domesday Book in 1086. Throughout the 1800s, the population varied between 183 and 301, according to the prosperity of farming at the time. It rose to 388 by 1911, declining sharply following the First World War. In the first part of the 1900s, the population rose at a steady rate, with a sharp increase in the late 1960s. This was primarily due to the development of Oak Tree Close and Moreton Paddox. By 2001, there was a further increase following the developments of Wilcox Leys, John Taylor Way and Chestnut Grove in the 1990s, bringing the population to 794 excluding the students in residence at the college.

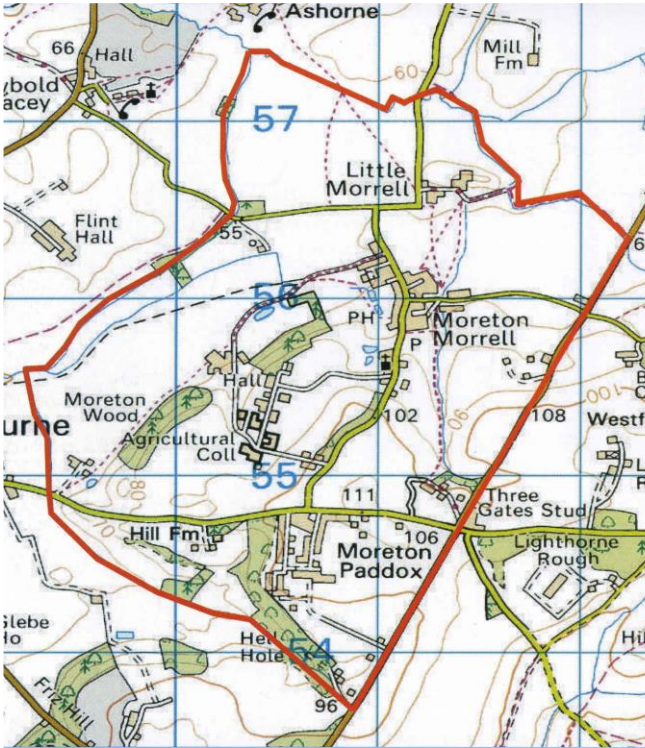
Moreton Hall, is a Grade II listed building in the village built on land bought in 1903 by Charles Tuller Garland, a son of a rich New York banker. Construction of the hall was completed in 1909. In 1948 it became the location of the Warwickshire Institute of Agriculture, and is now the location of one of the campuses and agricultural training centres of Warwickshire College. Moreton Hall was completely gutted by fire in 2008.

Moreton Paddox is built on the site of a large house of that name built at the beginning of the 20th century for Charles Garland's sister. The farmhouse and barns which were present before Moreton Paddox have been converted into homes.

Thomas Jefferson's great grandfather William Randolph was born in the village in 1650 before moving to America at the age of 22.

The village has a small primary school and one pub, The Black Horse, (formerly The Sea Horse).

Moreton Morrell Parish



Location

This small parish consists of 1678 acres and is bounded on the east by the Fosse Way and on the other three sides by small streams. The northern part is flat open country, containing an insignificant hill - the 'Merehull' (now Morrell) to which it owes its distinguishing suffix. Moreton occupies the southern portion of the parish, where the ground rises fairly rapidly from 200 ft. or less to about 350 ft. From the Fosse Way two roads lead westwards, Brook Lane and the southern most going to Wellesbourne, these are joined by another running north and south, along which

lies the village.

The village is surrounded by mature trees and farmland where sheep, cattle and horses graze and a variety of crops are grown. Despite this rural location, it is situated close to:

- Shakespeare's town of Stratford-upon-Avon
- Shops of Leamington Spa
- Warwick with its castle and racecourse

There are excellent road links - the M40 leads north towards Birmingham, the NEC and Birmingham airport and south towards Banbury and London.

Local rails link with stations at Warwick, Warwick Parkway and Leamington Spa make commuting relatively simple whether travelling north or south.

The nearest Airport is Birmingham, and for pleasure flights Wellesbourne.

Areas of Moreton Morrell Parish

The main road in the village runs from Little Morrell in the North to Moreton Paddox in the South. The majority of housing developments are situated along or running off this main artery. The village has evolved since the 1950s with developments being added each decade.

Little Morrell

The village can be approached from the B4100 in the north. This approach passes through Little Morrell, a small hamlet of three houses including Grange Farm, a 17th century building. Other cottages in this area were demolished in the mid-20th century.

John Taylor Way and Chestnut Grove

Heading south from Little Morrell, the road brings you to John Taylor Way and Chestnut Grove, on the right-hand side. This development of 37 houses was built in 1997 by Laing Homes and includes 8 social houses. John Taylor Way is named in memory of a past villager, who planted and tended the trees in Brook Lane and the road north of Duffus Hill.

Oak Tree Close

Continuing to head south, on the right-hand side off the main road is Oak Tree Close, a 1950's development of 44 houses and bungalows built around a green. These houses were originally built on the request of the government.

Fuller Place

Leading up the hill is Fuller Place on the main road, named after Mr. Fuller who built and ran the post office from 1910.

Middletown

At the top of Duffus Hill and heading south, Middletown is on the left-hand side. It consists of a small number of 18th and 19th century cottages, including Randolph Cottage where Thomas Jefferson's ancestor was born. Middletown has changed little over the years since the 1885 Ordnance Survey plan was published. It is part of the village conservation area.

Brook Lane

Brook Lane runs from the Fosse Way to the heart of the village, at the top of Duffus Hill. It crosses the Eponymous Brook which was bridged in the 1970s. On the right-hand side before the hill is a new development of three properties in Barn Fields.. On the left-hand side is Wilcox Leys, a development of homes built in the 1990s on the former land of Wilcox Farm.

Main Street

Opposite Brook Lane is the 17th century Moreton House that was built on the site of a chantry house belonging to the hospital of St. John in Warwick.

The Terrace

Continuing to head south, the main road passes the Black Horse pub on the right and on the left is a terrace of houses built to house workers at Moreton Manor. These are now all privately owned properties.

The Green

Beyond The Terrace and opposite the Village Hall is a small lane called The Green, which contains a number of houses, including the listed buildings of the Old Farmhouse and an old thatched cottage.

From the Green, the road continues up the hill, passing the school and Real Tennis Club on the left and the Village Hall, church and gates to Moreton Hall on the right. The road continues south to Moreton Paddox.

Moreton Paddox

From the South, there are two approaches passing through Moreton Paddox - from the Fosse Way in the southeast and from Wellesbourne in the southwest. Moreton Paddox is a residential development of the late 1950s and 1960s.

Moreton Paddox is built on the site of a large house of that name built at the beginning of the 20th century for the sister of the owner of Moreton Hall. The development incorporates some of the original ancillary buildings and garden of the hall. The farmhouse and barns, which were present before Moreton Paddox, have now been converted into homes.

Three Gates

The approach from the Fosse Way to Moreton Morrell from the southeast of the village passes Three Gates. This is named after the three nearby roads, which used to be gated at the junction of the Fosse Way, the Lighthorne to Moreton Morrell road either side of the Fosse Way and the Kineton to Moreton Morrell road.

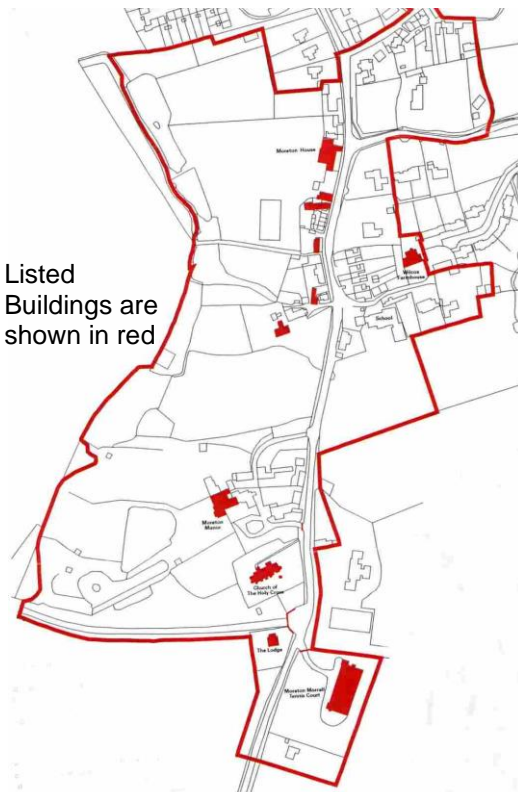
Fosse Way

The Fosse Way borders the east side of the parish of Moreton Morrell. It is the old Roman road linking Lincoln and Exeter. There are two approaches to the main village centre from the Fosse Way - one in the south, running past Three Gates to Moreton Paddox and one in the north leading to Brook Lane.

This is a detailed historical map of Moreton, showing streets, buildings, and landmarks. The map includes labels for various locations such as Moreton Hall Cottages, Duffus Hill, The Green, and the School. It also shows a playing field, ponds, and a railway line. The map is oriented with North at the top, indicated by a compass rose in the upper right corner.

Moreton Morrell Conservation Area

Moreton Morrell is a small linear settlement on a lane running north-south up a spur of rising ground. It has a compact inward-looking core with terraced cottages on both sides of the village street.



From a social and economic point of view, the village is now chiefly associated with Warwickshire College. However, Moreton Manor and Moreton House, together with the entrance gateways to Moreton Hall and its Real Tennis court, give one the impression that this was formerly a small service community to these closely grouped country houses with their extensive parkland gardens. Moreton Morrell has a distinctive landscape setting, which includes a substantial number of fine specimen parkland trees.

Moreton Hall is not included within the conservation area because it does not have strong physical attachment or reciprocal views to the village to warrant being embraced with it. It is, however, protected in its own right as a Listed Building. The gates and avenue of trees, the impressive Wellingtonia Drive, do relate to the village and are therefore included for the most part within the conservation area. Moreton Morrell

conservation area was originally designated in 1969 and revised, with significant extensions and other minor alterations, in September 1997.

War memorial

The war memorial consists of the church gate and the two gateposts, which contain name tablets, as well as the wall that runs alongside the road. The war memorial is totally non-denominational and recognizes the loss of local lives in the First and Second World Wars. In 2002-4, the war memorial was restored and an additional name was added to the tablet, which had previously been missed.

Hidden in the wall is a stainless steel time capsule, which holds a list of donors and a variety of 19 contemporary items.

Moreton Morrell Parish Council

Your Parish Council represents the interests of the Parishioners of Moreton Morrell and forms the part of local government closest to the people. In hierarchal terms there is also Stratford on Avon District Council, Warwickshire County Council and ultimately National Government.

The Council receives funding from a small element of the council tax precept (£23,460 in 2021) and uses it to the benefit of all local people. The council provides funds for streetlights, playing field, waste bins etc. It also provides grants to help maintain the churchyard, village hall and community café.

The Council communicates to villagers via the notice board and by funding a local bi-monthly newsletter known as the 'Villager', also an Internet site. The Council also provides allotments in the village and helps maintain footpaths and bridleways. In recent times the Council has developed a comprehensive village plan, campaigned for road repairs, speed reduction measures, highways repairs and mowing of verges for road safety.

The Parish Council comments on all local planning applications to represent the interests of villagers and to ensure development is in line with the local plan.

The aim of the Council is to represent and involve local people and therefore it invites all members of the public to attend meetings. There is always an opportunity at the start of each meeting for members of the public to raise concerns or comment on agenda items. District and County Councillor's also attend the meetings, and they provide feedback on services such as waste collection and recycling. A College representative provides a College report at each meeting.

Parish Council Meetings

Council Meetings are held 6 times a year on the third Monday of the months of January, March, May, July, September and November at 7:30 pm in the Village Hall. Meeting notices confirming dates, agendas and minutes are posted on the village notice board at least 3 working days before a meeting and members of the public are very welcome to attend.

The Annual Parish Meeting and AGM take place during the May Meeting. The Chairmen of the various Committees present their reports for the year together with the Parish accounts. Visiting guest speakers are invited to attend and everyone is welcome to attend to find out what has been happening in the village.

Parish Plan/Village Design Statement

In April 2006, the Parish Council published the Moreton Morrell Parish Plan and Village Design Statement. This plan was developed from responses to a detailed questionnaire delivered to all households and this document forms the basis for the Council's decisions about the village and is registered with Stratford District Council as a supplementary planning document. A copy of the plan is available on the Stratford District Council website.

<http://www.stratford.gov.uk/community/community-1091.cfm>

Parish Council Members

Rob James (Chair)	rjames1509@gmail.com	
Gerry Slora (Vice Chair)	Gerry.Slora@sjpp.co.uk	01926 650181
Anne Parry	avparry1@btinternet.com	01926 650064
James Gordon	c.gordon212@btinternet.com	01926 651063
Bernard Keavy	bernard@baltimorebc.co.uk	01926 679233
Eileen Edwards	dedward@btinternet.com	07927 311126
Claire Monks	clairerm@live.com	07723 050413
Pam Routly (Clerk)	pamroutly@btinternet.com	

Stratford on Avon District Council

Stratford-on-Avon District Council covers a large rural area, some 378 square miles, right in the middle of England. Over 115,200 people live in the District, the largest town being Stratford-upon-Avon with 23,000 residents. 53 councillors decide the Council's policies on how it delivers its services to the communities of South Warwickshire, each of whom is elected for four years.

The Council provides the following services: -

- Refuse and Recycling
- Planning
- Environmental Health
- Building Control
- Leisure activities
- Parks and Gardens

More information can be found on their website <http://www.stratford.gov.uk/> phone number is 01789 267575

Moreton Morrell is in the Wellesbourne East Ward and is represented by Anne Parry anne.parry@stratford-dc.gov.uk 07917 117737

Warwickshire County Council

Warwickshire County Council cover 5 Districts – North Warwickshire Borough, Nuneaton and Bedworth Borough, Rugby District, Warwick District and Stratford District. Policies are made by 62 county councillors who are adopted by the Council and appropriate budgets set.

The Council provides the following services: -

- Social Services
- Education
- Road maintenance and improvement
- Libraries
- Public Transport
- Fire and rescue
- Strategic and Emergency planning
- Trading Standards

More information can be found on their website www.warwickshire.gov.uk and their phone number is 01926 410410

Moreton Morrell is in the Division of Wellesbourne and your County Councillor is Penny-Anne O'Donnell and her contact details are: phone number 07792 884167
penny-anneodonnell@warwickshire.gov.uk

MP

Moreton Morrell is situated in the Kenilworth and Southam Constituency

Jeremy Wright (Conservative)
Jubilee House, Smalley Place, Kenilworth, CV8 1QG
01926 853650 jeremy@jeremywright.org.uk



Warwickshire College is one of the UK's largest general further and higher education colleges with more than 25,000 students. It provides high quality training and qualifications for individuals and organisations, plus leisure courses and activities.

There are six main centres as well as two Learning Centres and the use of more than 60 community centres across Warwickshire.

The Moreton Morrell centre is set in 750 acres of countryside and offers courses in land-based subjects.

There are purpose built centres for horticulture and veterinary nursing, as well as an animal welfare centre. The construction faculty has an open workshop area for brickwork, carpentry and multi-skilling.

The residential accommodation ensures that around 300 students benefit from a 'home from home' sense of community. There can be up to 800 students on site in any one day.

History of the Moreton Morrell College

Moreton Morrell has been a Land-Based Educational site for over 60 years. It has evolved as follows:

- 1948 Warwickshire Farm Institute was created.
- 1969 Became Warwickshire College of Agriculture.
- 1973 Equine Education started. The college soon became the leading college in Equine and Farrier education. The name was changed to Warwickshire College for Agriculture, Horticulture and Equine Studies to reflect its more diverse programs.
- 1993 The college became Independent from the Local Authority.
- 1996 The college merged with Leamington Spa College.
- 2009 Celebrates Diamond jubilee (60 years) of Agricultural Training

Nethermoreton Farm



Nethermoreton farm is a mixed farm covering over 250ha. Since 2016 the farm has been managed by Velcourt who oversaw the move from Dairy to a mix of beef sheep and arable. The farm is run commercially while providing an interesting and diverse resource for students to learn and develop skills to enable them to either progress to Higher Education or allow them to enter the agricultural industry.

Arable

The arable area of the farm is approximately 100ha over predominantly clay loam soil. The arable rotation includes winter wheat, which is grown for milling. Winter and spring barley which is either grown for animal feed or malting and finally a break crop of either oil seed rape, beans or oats. The farm has a contract with Tubbs End Farms who carry out the majority of field operations with the students helping with the college machinery where possible. The students carry out regular crop walks throughout the growing season and have access to all the crop records and inputs so that by the end of their studying they know the process of getting a crop from planting to harvest.

Beef Unit

When the dairy herd was disbanded in 2016 the money generated from the sale of the cattle was used to install loose housing for beef cattle along with a handling system that's safe for cattle and also for students to carry out day to day cattle management. Currently there are 420 beef cattle on farm these come in as 4 month old calves at 150kgs and are then fattened to 600kgs. All of the calves originate from local dairy farms and are a dairy beef cross (mother a dairy cow father a beef bull) this utilizes the byproduct of the dairy industry and also produces a finished animal that meets processor requirements.

In 2018 we began running feed efficiency trials to determine which beef genetics are most feed efficient. The aim of this trial is to determine the most feed efficient genetics to reduce the feed costs for the farmer and also reduce the environmental impact of the cattle.

Sheep Unit

The farm owns 515 ewes, these are predominantly North Country mules the rest are homebred Texel cross Mules. The ewes are grazed on a mixture of permanent and temporary grassland at Moreton Morrell and also at Compton Verney. Lambing takes place throughout March and usually lasts 3 weeks. During this time we host a lambing weekend where members of the public can visit the farm to witness the lambing and also see what else we do on the farm.

Conservation

Nethermoreton Farm has been a member of various environmental schemes throughout the years, however it is now part of the mid –tier scheme. The scheme includes various environmental options including 1.6ha of wild flowers, 3.5ha of winter bird feed, 5.5ha of grass margins, 5.2 ha of low input grass flower meadows and 16,500 meters of managed hedgerow. The students are involved with the management of the environmental areas and have had great success with installing owl, kestrel and farmland bird boxes throughout the woodland and hedgerows on the farm over the past 5 years.

Machinery

The machinery used at the farm is typical of a mixed farm practicing up to date husbandry using modern technology such as GPS and variable rate applications. The College has links with industry and for the past few years has provided bespoke Dealership Apprenticeship for AGCO, manufacturers of Massey Ferguson machinery.

Woodlands

The college estate at Moreton Morrell has two blocks of mature woodland, which total 12.82 hectares together with a number of younger plantations at various stages of development, giving a total tree cover of 19.8 hectares.

Many of the courses have a woodland or conservation input with some covering specific aspects of Forestry, Woodland Management, Game keeping and Estate Maintenance in greater detail.

Students on the Farm

Agricultural students are on the farm regularly helping with and learning everyday tasks involved in the management of the beef, sheep and arable. The students have access to all the farm records and trial information data which they can use for their learning and farm projects.

Moreton Hall



Moreton Hall is a Grade II listed Georgian styled Edwardian house.

In the early 1900s, Eton educated American Charles Tuller Garland, son of the co-founder of the New York based National City Bank, decided to build a house in South Warwickshire countryside, with views over the River Avon valley.

Designed by the fashionable society architect and decorator W. H. Romaine-Walker, it was inspired by Wilton House near Salisbury, and given a Palladian style. Built in 1906/7, designed for lavish entertaining, the Hall has sumptuous plasterwork, particularly in the barrel-vault-ed great hall, library and dining room. Romaine-Walker also landscaped the grounds, with a Wellingtonia-lined drive leading to the hall, its manicured blue garden, polo school and other equestrian facilities.

In 1913 Moreton Hall and the associated Morton Farm were purchased by Gilbert Player.

After the Second World War, the grounds of Moreton Morrell were used to accommodate a farm-training institute by the Warwickshire Agricultural Committee, later absorbed as part of Warwickshire College. In recent times the Hall has been used as a Conference and Wedding venue.

On 19 March 2008 a fire broke out at 16:30 in the roof of Moreton Hall, after students at the agricultural college occupying the house had left for the weekend. 80 firefighters tackled the blaze with 15 appliances from Warwickshire Fire and Rescue Service were sent to help to extinguish the flames, which could be seen three miles away as they leapt into the sky. Over £6 million worth of damage was caused.

Warwickshire College has announced plans to resurrect the Hall to its former glory.

Moreton Morrell School



Moreton Morrell Church of England Primary School was founded in 1874 to serve the children of the parish of Moreton Morrell. It originally occupied the site of the village hall but moved into its current building at the beginning of the twentieth century. Since then the school has undergone a series of changes. The hall was built on in the 1950s and two extra classrooms, the current Reception classroom and computer suite added in the 1990s to cater for the increase in pupil numbers. The Y1/2 classroom completed in 2000.

In 2005 an ICT (Information and Communication Technology) suite was completed, enabling whole classes to access up to date information. The school offers a wide range of musical instruction - flute, drums, violin, cello to name a few. Sport is also popular with flourishing cricket, netball and football teams. In July 2005 the school achieved silver status in the Warwickshire Healthy Schools Scheme. This followed the culmination of months of effort, involving not only pupils and staff but also parents, the church, school governors, a school health adviser and other outside agencies. The school also has a strong Parent Teacher Association, which regularly holds fundraising events and has recently refurbished the school library.

The school's immediate catchment area is the parish of Moreton Morrell and Newbold Pacey with Ashorne but the school has many children on roll from out of immediate catchment. As a small village school it has approximately 100 pupils aged from four to eleven, creating a family atmosphere.

The school is an important component of the village, adding to its family atmosphere and community spirit.

The latest OFSTED inspection report (2017) which categorises the school as 'Good' can be found at:

[Ofsted Reports | Moreton Morrell CofE Primary School Ofsted Report 25 Apr 2017](#)

What Ofsted says about Moreton Morrell School:

- Pupils' behaviour is very strong. Pupils are courteous, polite and inquisitive learners. Pupils are given key responsibilities as they move through school. They are keen to be 'buddies' and enjoy supporting one another in their learning and play.
- The early years provision is a key strength of the school. Pupils are well challenged from the moment they join school and parents are encouraged to take part in their learning journey.
- The quality of teaching and learning is good. Teachers have many key strengths and appreciate the professional development and support they receive from leaders.
- Leaders and governors are uncompromising in their ambition. They have high expectations of the whole staff and lead by example

<http://www.moretonmorrell.warwickshire.sch.uk>

If you wish to arrange a visit please contact the Head Teacher – Mrs Sarah Eadon, on 01926 651355

Secondary Schools

The Village is close to a number of secondary schools both public and private, some of which are served by buses. The closest is Kineton High School, details of which can be found at: <http://www.kinetonhighschool.org.uk/>

Kineton High School

This has always been a popular secondary school and has an excellent reputation in South Warwickshire. The school is situated on the outskirts of the village of Kineton and attracts students from a wide area. It caters for girls and boys aged 11 to 19 as a non selective community school maintained by Warwickshire County Council. There are approximately 980 students on roll, of whom about 130 are in the Sixth Form.

Church of the Holy Cross



The parish church of the HOLY CROSS stands south of the village to the west of the road. It is a building consisting of a chancel with a north vestry, nave with a north porch and a west tower. The church in the main dates from the 13th century, but it is possible that the nave, from its proportions and thick walls (over 3 ft.), is of the 12th century.

No details of this date remain, but reset in the north wall of the tower is the head of a small 12th-century window which may have been moved from the west wall of the nave. Repeated later repairs and alterations have done away with the 13th-century windows and doorways. Most of the windows are of the 15th century or later, and those in the nave have lost their original mullions and tracery.

The upper part of the tower is of 19th-century brickwork and the north porch was added at the end of that century. There have been several modern restorations, including one of 1886. There are three bells, two of 1616, and the tenor by Newcombe of Leicester 1609. The communion plate includes a worn Elizabethan cup, with renewed stem, and its paten cover. The early registers, beginning in 1538, are now deposited with the county records at Warwick.

In 2017, the Room was built joining on to the church. This marked the end of a project lasting for over a decade. The Room meets several local needs, including:

- A space for the community to hold meetings or social events
- A venue for children's work that is separate from the main church
- Improved facilities such as a toilet, kitchen area and storage.

The room was paid for by a combination of personal donations and grants and is available for hire (see below)

Services

On most Sundays, services are held in the four parishes of Moreton Morrell; Newbold Pacey and Ashorne; and Lighthorne, Lighthorne Heath and Chesterton which make up the Mid Fosse Benefice.

Services are advertised each month in the Mid Fosse Parishes magazine, on the Church notice board, and here on the website below. The magazine is delivered monthly to each house in the village and surrounds. The usual pattern at Moreton Morrell includes a 10.30am Family Communion Service on the first Sunday and a Prime Time on the third Sunday but there are other offerings and again the best source of information is the Parish magazine.

<http://www.fossedeaneary.co.uk/churches/moreton%20morrell.asp>

Church Contacts

The Vicar is the Revd. Lynda Lilley and her contact details are below. The Secretary to the Church Council is Hilary Williams (tel. 01926 651310)

Email: vicar.midfosse@gmail.com

Telephone: 01926 651735

Mobile: 07747 846293

Prime Time

Prime Time is an informal, shorter service aimed at a younger congregation. To this end we use a PC projector for words to songs and visual aids, make full use of our vibrant music group, and seek to use varied activities to involve the congregation. It is normally held on the third Sunday of each month.

Flower Arranging

The flower arranging group is very active and always looking for those wishing to get involved – no prior experience necessary.

Please contact Shirley Hoyle on 01926 650031 or Libby Struthers on 01926 651045

Womens Fellowship Group

This study group meets on alternate Tuesdays at 10.00am. Members come from Moreton Morrell, Lighthorne and Ashorne. The morning is a mixture of friendship, study and laughter. Please contact Gillian Jones

Other Churches

A Methodist Church and Roman Catholic Church are located in Wellesbourne, other denominations and faiths in Leamington Spa, Warwick and Stratford Upon Avon.

The Room at Moreton Morrell



The Room attached to the Church is a modern community facility which is designed to complement the Village Hall. Suitable for many activities, including, but not limited to, yoga and music groups, meetings and social events, including children's parties. It has a fully fitted kitchen, disabled toilet and can be booked at very reasonable rates. Bookings can be made via Moreton.Morrell@gmail.com and the contact is Alison Gregory.

The Church and Community

We put a great deal of emphasis on the church as part of the community and as such throughout the year seek to hold events suitable for all whatever your faith or none. These include carols in the churchyard at Christmas, Craft Fairs, Village Fete and a popular Barn Service. Details are advertised in the magazine. It is your church in your community.

The Pub –The Black Horse

The Black Horse was previously known as the Sea Horse. It was once two cottages, with the right-hand cottage being used as the pub. The entrance porch was added in later years. The public house has been in the village since at least 1886, when the census survey lists Charles Wincott as Grocer and Publican. The Black Horse changed hands in 2019 and following the granting of planning permission has exciting refurbishment plans in the pipeline for its reopening.



The Shakespeare CAMRA website has described the pub in the past as

“Appreciate this village pub while you still can, for it is a throwback to a bygone age; nothing seems to have changed since the 60s. Wooden settles are arranged around the walls of the cosy bar, and the music on the jukebox is mostly from the Beatles era. A pool table in the back room is popular with younger folk. No meals, but the freshly made rolls are excellent value. In summer there is a peaceful rear garden overlooking the Warwickshire countryside.

The guest beer is usually of highish gravity (4.5%+) and from a small independent brewery. In the [Good Beer Guide](#) most years since 1992.”

The Real Tennis Club



The Moreton Morrell Tennis Court was built in 1904-5 by Charles Tuller Garland, an American citizen, who later served with the British Army in the Great War and was owner of Moreton Hall (now part of Moreton Morrell College), whose entrance gates face those of the Court. The family traced their descent from the Garlands of Essex, whose coat-of-arms, "or three pallets gules, on a chief per pale azure and of the second a garland and a demi-lion rampant of the field", is to be seen over the main door of the Hall.

Charles Garland did a great deal for tennis and the many outstanding events at Moreton Morrell included the inaugural match between his resident professional, Ted Johnson, and the celebrated Peter Latham, five times World Champion between 1895 and 1907.

Garland died in 1921 and the Moreton Hall estate was bought by Colonel R.J.L.Ogilby, DSO who placed his own coat-of-arms in the court itself, over the net. During the 1930's, the Court was kept going by a small group of enthusiasts including Col.E.J.L.Speed, MC. who leased it from Colonel Ogilby and saved it from being requisitioned during the 2nd World War. After Major James Dance, MP, acquired the Court in 1949, a programme of matches with other clubs was introduced. In 1963, with the generous help of many supporters of tennis, including Mr. Garland's three daughters, the Moreton Morrell Tennis Court Company was formed to acquire the building and grounds, and the Court owes a further debt to the late Lord Willoughby de Broke, MC, AFC, Chairman of Directors until 1971.

Ashorne and Moreton Morrell Cricket Club

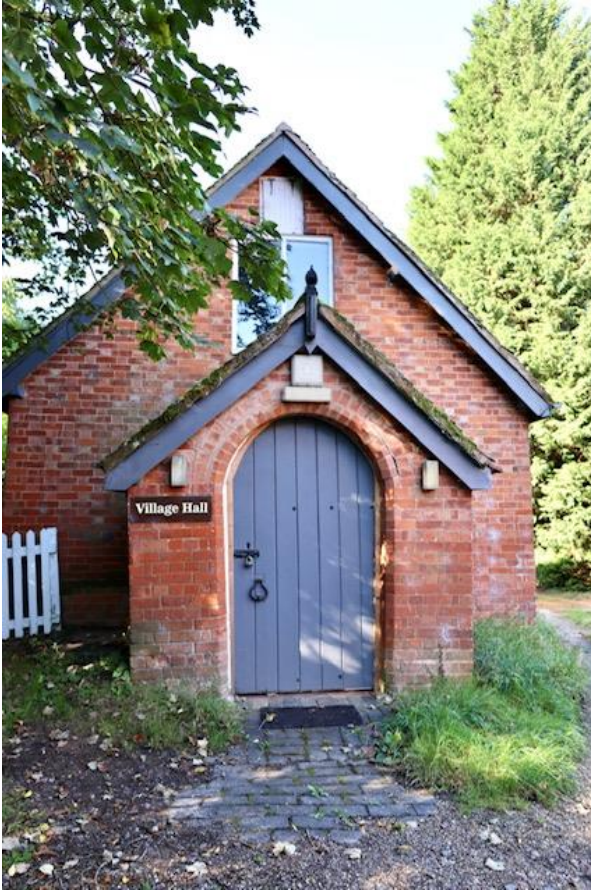


Ashorne & Moreton Morrell Cricket Club is situated just a few miles from the historic towns of Stratford-upon-Avon, Warwick and Royal Leamington Spa. There are two teams playing each weekend during the summer, running a successful league side on Saturday's in the Cotswold-Hills-League and friendly local matches on a Sunday where the veterans of the club nurture our younger members.

The pitch is in a beautiful setting on the outskirts of Ashorne village. It is noted in Wisden for being in two parishes, the pitch in Ashorne and the pavillion in Newbold Pacey, separated by a brook, which is crossed by one of two bridges. It is also in the Wisden archives for playing several matches against the MCC, the first in 1906 and the latest in 2006 to celebrate the centenary. On this occasion England Chairman of Selectors, David Graveney brought a hand picked team for a glorious day of cricket.

Ashorne & Moreton Morrell started as separate sides in the 1860`'s but by the turn of the century had joined forces at Ashorne.

Village Hall



The current village hall is the former schoolroom and was purchased for £80 in 1924.

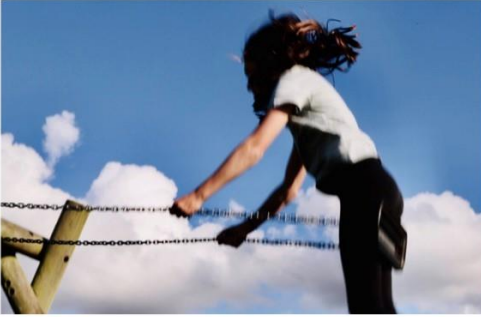
Some modernisations were made to the hall in 1986 and whilst it has continued to be modernised and redecorated more recently the hall continues to require regular maintenance.

A Village Hall Committee has been set up to raise money to attempt to build a completely new hall. Land is not currently forthcoming and present thoughts are to investigate the cost of modernisation of the existing village hall. This would not resolve the issue over parking and would not allow for an increase in size of the hall but would resolve some of the issues regarding maintenance.

The Village Hall Social Committee organises many activities; Quiz Nights, Food Nights, Bingo etc

The Hall can be booked by contacting Mike and Diana Harwood on Tel 01926 651391 or dianacoleman@willows2.plus.com

Playing Field



The Playing Field is located by Oak Tree Close, the land is rented from Warwickshire College and the equipment and maintenance is funded by the Parish Council Precept.

The facilities include: Swings, Slides, Swing Basket, Basketball/Netball Court, Zip-Wire Adult Outdoor Gym, Young children climbing frames, see-saw and activity centre, Football Goals, Picnic Tables and Benches

Please ensure young children are supervised. All dogs must be kept on leads.

Utilities

Water

The Parish was connected to a mains water supply in 1954. Today the provider is Severn Trent on 0345 7500 500, please contact them when you move house.

Electricity

Moreton Morrell was one of the first villages in the area to be served by mains electricity in the early 1900s. Please contact the existing supplier when moving house, if you do not know who this is ask Western Power Distribution on 0800 096 3080

Telephone

The first public telephone in the village was a manual exchange situated within the Post Office. In 1946, a public telephone box was installed outside the Post Office and was later moved to the top of Brook Lane where it is now used to host the village's defibrillator. Please contact BT on 0800 800 150 when moving house.

Broadband

Broadband has been available in the village since Sept 2004. The maximum download speed is 80Mbps (Superfast) and 18Mbps (Standard) with maximum upload speed of 20Mbps (Superfast) and 1Mbps (Standard).

Gas

There is no mains gas except in parts of Moreton Paddox. However, newer developments have metered Liquid Petroleum Gas (LPG) supplies, for example, parts of Moreton Paddox, John Taylor Way and Chestnut Grove. The supplier is Flogas on 0800 574574

Mobile Phone

Mobile Phone signals can be variable in the Village, check with your neighbours for best reception before signing up to a particular provider.

Street Lights

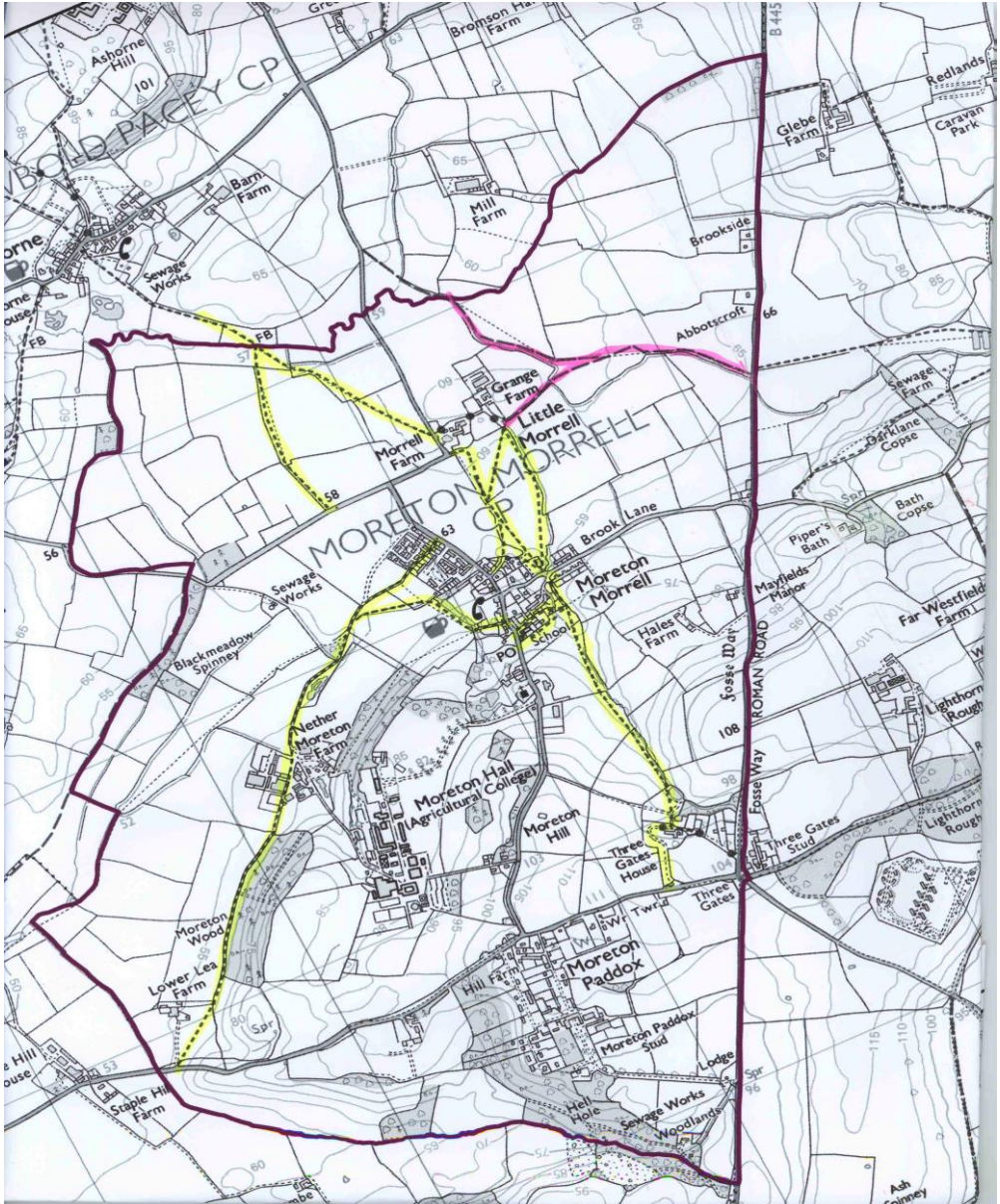
There are 14 in total provided by the Parish Council. Please report any that are not working to the Clerk.

Litter/Dog Mess Bins

There are several litter bins and Dog mess bins around the village. Please keep the Village Clean and Tidy. Dog mess is also a concern for a large proportion of the village Please clean up after your dogs, even when walking in fields and especially on college grounds.

Footpaths

There are a wealth of footpaths over the surrounding farmland, providing miles of walks for local people. Maintenance of the village footpaths is also on the agenda at Parish Council Meetings. Any damaged footpaths should be reported to the Parish Council who will raise with the County Council for repair. Footpaths in yellow, bridleways in pink.



Local Shops

Bakery

West's Bakery, 14 Warwick Road, Wellesbourne. 01789 840252
Corner Cottage Bakery, Southam Street, Kineton CV35 0LN

Butchers

Maypole Butchers, 2 The Precinct, Wellesbourne. 01789 840437
H C Lewis Butchers, Banbury Street, Kineton, CV35 0JS 01926 640228
Lighthorne Lamb, Old School Lane, Lighthorne. 01926 650160

Cashpoint

Free to use Cashpoints are located in Wellesbourne at Co-op, One Stop Shop and Sainsbury's

Chemist

Wellesbourne Pharmacy, Rivers Way, Wellesbourne, CV35 9RH 01789 840484

Coffee Shop / Café

The Garden Shed Cafe, 2 Newbold Rd, Wellesbourne CV35 9NZ 01789 507619
Coffee Shop and Sandwich Deli, 1 The Precinct, Wellesbourne. 01789 470800

Fish

Chris Davis calls at Moreton Morrell on Wednesdays between 10:30am and 11.00am.
For more information call 01295 258922

Florist

The Flower Studio, 11 Bridge Street, Wellesbourne CV35 9QP 01789 509305
Flower Thyme, Banbury Street, Kineton CV35 0JS 01926 640437
They deliver to Moreton Morrell

Garden Centre

Charlecote Garden store, Charlecote. 01789 841842

Groceries (Local)

Co-op, Loxley Close, Wellesbourne. 01789 840861 and
Sainsbury's Loxley Road, Wellesbourne

Hardware Store / DIY (Local)

Home Supplies and DIY, 4 The Precinct, Wellesbourne 01789 840766

Milk

Your milkman is Darren Gough who delivers to your area on Mondays | Wednesdays | Fridays can be contacted via www.milkandmore.co.uk . Darren also delivers basic groceries such as bread.

Newspapers

Newspapers and Magazines are delivered daily by the One Stop Shop, Bridge Street, Wellesbourne. 01789 840286

Pet Supplies

Pets At Home, Unit, 2B Myton Crofts, Leamington Spa CV31 3NY 0345 608 0056

Post Office

The nearest Post Office is Wellesbourne Post Office. Telephone: 01789 470094
Address: 5 Bridge St, Wellesbourne, Warwick, CV35 9QP

Public Houses

The Black Horse, Main Street, Moreton Morrell 01926 651231
The Cottage Tavern, Ashorne 01926 651410
The Antelope, Lighthorne 01926 651295

Supermarkets

Aldi, Queensway, Royal Leamington Spa, Leamington Spa CV31 3LZ
Asda, Sydenham Ind Estate, Leamington Spa CV31 1YD 01926 311656
Lidl, Myton Rd, Warwick, Leamington Spa CV31 3NY
Morrison's, Old Warwick Rd, Leamington Spa CV31 3NU 01926 335166
Sainsbury's, Shires Retail Park, Leamington Spa CV34 6RH 01926 452565
Tesco, Emscote Road, Warwick. CV34 5QJ 0845 6779701
Waitrose, Rosebird Centre, Shipston Road, Stratford CV37 8LU 01789 263465

For those without private transport, the local 77 bus stops at Sainsbury's, on the perimeter of Leamington Spa, and near Tesco's at the top of the Parade, Leamington Spa.

Vets

Avonvale, 29 Warwick Road, Wellesbourne. 01789 841072
S J Hales Veterinary Group, 1A Banbury Street, Kineton 01926 641000

Wellesbourne Parish Council publishes an *Index of Shops and Amenities*. For further information visit: Index of Shops and Amenities 2020: Online listings – wellesbournepc.com

Emergencies

Police

Moreton Morrell fortunately has a low crime rate, however please use the following contact details if you need to contact the Police.

POLICE NON-EMERGENCY NUMBER 101

Only call 999 in an emergency when a crime is in progress or life is in danger

How to get in touch with the Safer Neighbourhood Team:

Tel: 01789 444600

Email: wellesbourne.snt@warwickshire.pnn.police.uk

Twitter: @WellesbournCops

Instagram: southwarwickshiresnts

Facebook: <https://facebook.com/WbournePolice>

To report a crime anonymously call Crimestoppers on 0800 555 111

PC Catherine Morgan

PCSO Sarah Bailey

PCSO Liam Allen

Fire Station

Wellesbourne Fire Station Station Officer

Loxley Road, Wellesbourne

General Fire Safety Advice Tel. 01926 410800

In case of Fire or Emergency Tel. 999

Health

Doctor

The nearest health practice (which includes Moreton Morrell in its catchment area) is Hastings House Surgery, Kineton Road, Wellesbourne, Warwick CV35 9NF Tel: 01789 840245 <http://www.hastingshouse.org.uk>

Alternatively, The Vale of Red Horse has GP surgeries in Kineton and Tysoe: Old School, Market Square, Kineton – 01926 640471, www.kinetonsurgery.warwickshire.nhs.uk

Dentist

The nearest dental practice is at Moreton Morrell:

Brook House Dental Practice, Moreton Morrell, Warwick, CV35 9AR. 01926 651400

Langman Associates, 2 Willow Drive , Wellesbourne. 01789 840786

Other dental practices can be found at Leamington Spa, Warwick and Stratford.

Defibrillator

There is a defibrillator located in the BT Telephone Kiosk at the top of Brook Lane in Moreton Morrell, please follow the instructions for use in an emergency before the ambulance crew arrive on the scene. The next nearest defibrillator is located at Ashorne Village Hall.

Hospital

The nearest Accident and Emergency Hospital, Lakin Road, Warwick. CV34 5BW

01926 495321 ext 4032 For A&E <http://www.warwickhospital.nhs.uk/>

NHS Direct

For medical advice before calling and Ambulance 0845 4647

Air Ambulance

Warwickshire has an air ambulance based at Coventry Airport, the landing site for Moreton Morrell is the Playing Field to the rear of Oaktree Close.

Other Emergency numbers

Gas Leaks 0800 111 999

Western Power Distribution 0800 056 8090

Severn Trent Leaks 0800 783 4444

BT Faults 0800 800 151

WCC Emergency 01926 410410 (Office hours) 01789 412515 (Emerg)

Stratford DC Emergency 01789 267575 (Office hours) 01789 414066 (Emerg)

Allotments

26 Allotments are available in three locations in the Village please contact the Chairman on 07496567472 or john@dunmovin.co.uk for availability.



Help Lines

Consumer Direct 08454 040506
Trading Standards 0345 404 0506
Samaritans 116 123
RSPCA 0300 1234999
Birmingham Airport 871 222 0072

Communication

Notice Board

The notice board is located by the Village Hall



Villager

A 'Villager' magazine is produced bimonthly after the Parish Council meeting and advertises local activities and events.

Church Magazine

The 'Mid Fosse Parishes' magazine is produced on a monthly basis. This covers the parishes of Moreton Morrell, Ashorne and Newbold Pacey, Lighthorne and Chesterton.

ARTS

ART Group

WELLESBOURNE ART GROUP Mrs. K. Parton
Meets every Wednesday 7.00 pm - 9.00 pm Tel. 01789 841073
Wellesbourne Fire Station, Loxley Road robandkate@parton.idps.co.uk

Cinema

Everyman Cinemas, Wood Street, Bell Court, Stratford-upon-Avon 0872 436 9060
Apollo Cinema, Portland Place East, Leamington Spa, 01926 427 448

Theatre

Royal Shakespeare – Stratford upon Avon 01789 296655

Library

The nearest public library is in Wellesbourne at Kineton Road Warwick CV35 9NF
telephone: 01789 840528 fax: 01789 840528

Library Opening Hours

Monday	9.30 – 12.30
Tuesday	Closed
Wednesday	9.30 – 12.30 and 1.30 – 5.30
Thursday	Closed
Friday	9.30 – 12.30 and 1.30 – 5.30
Saturday	9.30 – 12.30

A mobile library calls at the village and stops at Oak Tree Close every three weeks. For further information, visit: www.warwickshire.gov.uk

Sport

Riding Stables / Livery yards

There are many stables and horses in the village, but most are privately owned, they do provide livery but not lessons. The nearest riding stables are Pittern Hill, Kineton 01926 640370

National Cycling Network

Part of the national cycle network passes through Moreton Morrell. The route comes up Staple Hill from Wellesbourne, turning left into the village at Moreton Paddox and then right into Brook Lane, crossing the Fosse Way to Lighthorne.

Football

The nearest football club is Wellesbourne Wanderers, they have 17 different teams ranging from Under 8's to Under 18's and further information can be found at <http://www.wellesbournewanderersfc.co.uk/>

Leisure Centre

The nearest is located at Bridgefoot, Stratford-upon-Avon, facilities include 33m pool , fitness studio with 70 pieces of equipment, badminton, four all weather pitches, sunbeds. 01789 268826

Real Tennis

Moreton Morrell Professional Tom Granville can be contacted by e-mail pro@mmtcc.org or by phone on 01926 651229 For further information please visit www.mmtcc.org

Wellesbourne Sports & Community Centre

A fully equipped gym offering exercise classes available on a membership or pay as you go basis, a multi-use games area with two 3G five-a-side football pitches and two hard courts for tennis or netball which can be hired all year round by teams, clubs or individuals. The facilities also include meeting rooms which can be hired.

www.wellesbournesccl.co.uk Loxley Close, Wellesbourne, CV35 9RU 01789 842406

Rugby

Wellesbourne RFC, Wellesbourne Sports & Social Club, Loxley Road, Wellesbourne. CV35 9NE

Tennis

The Lighthorne Tennis court is available to all in the area – Contact Rosanne Mann 01926 651516

Cricket

The Ashorne and Moreton Morrell Club fields a single team on both Saturdays and Sundays throughout the summer. Saturday cricket is currently played in Division Two of the competitive Cotswold Hills League, whilst Sundays are for friendly matches. We are a friendly Club which is always looking for additional playing and social members of all ages and abilities.

For further information please visit the Club's popular website: www.ashorne.net. Alternatively, contact the Club Chairman, Richard Moon on 651640 or the Club's Secretary, Mark Freeman on 01789 840504 – www.ammcc.play-cricket.com

Table Tennis

For competitive table tennis player the club in Ashorne plays in both the Stratford and Leamington leagues and occasionally have practice nights in Ashorne Village Hall. If you are interested please contact Steve Bolton, Sunnydene, Ashorne 01926 651768. Alternatively Moreton Morrell has recently started up a Table Tennis Club in its village hall which is geared towards young players and more social games at present.

Keep Fit/Gym

Owen Pettiford runs circuit training classes at Moreton Morrell College which are supported by the parish council. For further information, please contact Owen on owen_pettiford@yahoo.com

Club and Societies

Book Club

The Moreton Morrell Book Club meets monthly to discuss recommended books enjoyed by the groups members. The format is informal and friendly, with the venue varying though typically based within the village itself. Book choices for the following meeting are typically announced at the end of each meeting. Contact: Hilary Williams 651310 for more details.

W.I

Newbold Pacey and Ashorne WI is a friendly group of local ladies who meet on the third Thursday of the month at 7.30 pm in Ashome Village Hall. Secretary is Sue Philpott, 01926 771001

Whist Drive

Ashorne Village Hall, Thursdays at 7.30 pm. Contact Sheila Wyatt 651762 or Jim Thomton 651436.

Village Choir

The village choir meets on a Wednesday in The Room from 7.30pm – 9.00pm, please contact Nicola Atkins – nicolaatkins@gmx.co.uk

Social Media

The village Facebook page can be found at:

<https://www.facebook.com/moretonmorrellpaddox>

The village is also on Nextdoor.

Transport

Buses

77 – Mondays to Saturday

Leamington; Shires Retail Park; Bishops Tachbrook; Ashorne; Moreton Morrell; Moreton Paddox; Lighthorne Village; Lighthorne Heath; Heritage Motor Centre; Gaydon; Kineton; Temple Herdewyke; Northend; Fenny Compton; Farnborough; Avon Dassett

Provided by Stage Coach – timetable at bus stop on Fullers Place or at

www.stagecoachbus.com

Flexibus 498 Thursdays

Offchurch, Radford Semele, Harbury, Moreton Morrell, Lighthorne, Lighthorne Heath, Gaydon, Temple Herdewyke, Hanwell, Banbury

Provided by A & M GROUP Telephone: 0500 212225 calls on request only

U BUS

This service is for all residents, wherever they may live in the district, who are stuck for transport to get to local destinations on weekdays between about 9.15am and 2.30pm. The scheme is for those who:

- Have a genuine need for local transport
and
- Cannot access public transport because of mobility problems or other issues
or
- Live in an isolated location with no other form of transport available to them

The Ubus service can be used for a wide variety of travel needs, such as visiting friends, attending social groups, leisure activities, lifelong learning and, of course, shopping. Further details are available:

Contact 01789 264491 or email ubus-stratford@lincolnshire.gov.uk

Voluntary

The Voluntary Action Group for Stratford on Avon provide Volunteer Drivers Phone 01789 262889 for details or visit <http://www.vasa.org.uk/>

Recycling and Bin Collection

Our collection day for Moreton Morrell is Wednesday, we are located in Zone 2.

Please ensure your bins are available from 6.00am on the morning of your collection. Please note that your bins will be collected as normal over bank holidays (with the exception of Christmas & New Year). Your Collections

Household Waste Site

County Council Depot, Loxley Road

Domestic waste and recycling

Hours: Mon. - Fri. 8.00 am - 3.15 pm. Sat. 8.30 am - 4.15 pm.

Sun. 8.30 am – 4.15 pm (Winter)

Hours: Mon – Tues Thurs - Fri: 9.30 – 3.15

Wed 9.30 – 6.15

Sat – Sun: 8.30 – 4.45 (Summer)

All household goods taken except plastics. No gas bottles or car tyres.

Dry Recycling - In your Blue Lidded Bin

The Blue Lidded bin can be used for the collection of waste paper, magazines, yellow pages, glass bottles and jars, food and drink cans, cardboard, plastic bottles, cartons, foil and household plastic packaging. Household plastic packaging includes yoghurt pots, margarine tubs, fruit punnets, microwave trays etc but not film, cling film or carrier bags. All recyclable items must be clean. Please put items loose in your blue lidded bin not in carrier bags. Unfortunately, we cannot take plant pots. This bin is collected every other week.



Green Waste - In your Green/Green Lidded Bin



The Green/Green Lidded Bin can be used for the collection of kitchen waste in addition to the green waste that can be collected from each home. This service is available by purchasing a green waste permit from Stratford District Council at a cost of £40 per annum per bin. However, it is hoped that more households will use the [home composting scheme](#), available from Warwickshire County Council, This will help to reduce the environmental impact caused by collecting material that can be composted at home.

General Waste - in your Grey Bin



The Grey Bin is for anything that can't be recycled in the other bins. This rubbish will be sent to landfill and will be collected every two weeks. The bin should be put out for collection with the lid completely closed. No side waste will be collected.

Footnote

Hope you enjoy living in this lovely village, if you have any suggestions to improve the next version of this welcome pack or would like an electronic copy please email pamroutly@btinternet.com .

Latest copies of this welcome pack can be found at www.moretonmorrellpc.co.uk

September 2021